



## **JACKS Coffee Shack Sustainability Policy**

At JACKS Coffee Shack we are committed to reducing our environmental footprint and promoting sustainable practices in all aspects of our operations. We recognise the importance of preserving our planet for future generations and strive to make eco-friendly choices every day.

We are committed to operating our mobile coffee trailer in an environmentally responsible manner, minimizing our impact while serving exceptional coffee to our community. This policy outlines our approach to sustainable business practices and our ongoing commitment to environmental stewardship.

### **Reducing Waste**

- We will not use single use plastic in any of our operations.
- We prioritise the use of biodegradable and compostable packaging materials, such as cups, lids, straws, and napkins.
- We encourage customers to bring their own reusable cups by offering a discount.
- We minimise food waste by carefully managing inventory and donating surplus food to friends and family.
- We minimise packaging waste through bulk purchasing
- We sort waste on-site to maximise recycling potential

### **Sourcing Responsibly**

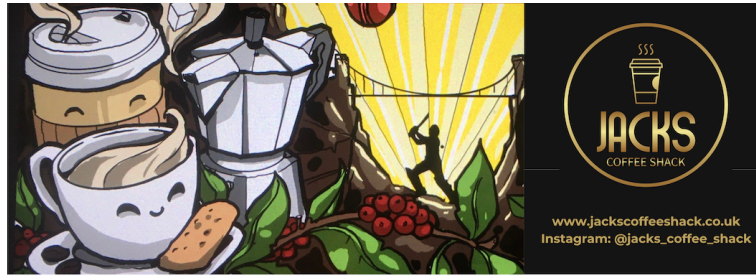
- We choose suppliers who share our commitment to sustainability and ethical practices.
- We source our coffee beans from Extract Coffee Roasters in Bristol who only work directly with coffee farms that practice sustainable farming methods.
- We source milk from local dairies where possible.
- We use organic and locally sourced products when available.
- We select suppliers with strong environmental credentials.
- We minimise delivery distances where practical.

### **Energy and Water Conservation**

- We use energy-efficient appliances and equipment in our trailer to reduce energy consumption.
- We implement water-saving measures, such as using taps and regularly checking for leaks.
- We explore opportunities to utilise renewable energy sources for the future, such as solar panels, to power our operations.

### **Transport and Operations**

- We keep our vehicles regularly maintained to ensure optimal fuel efficiency
- We plan routes to minimise fuel consumption



### **Site Operations**

- We leave no trace at operating locations.
- We use biodegradable cleaning products.
- We minimise water and energy usage at each site.
- We dispose of all waste materials properly.

### **Promoting Sustainable Practices**

- We educate our staff about our sustainability policy and encourage them to adopt eco-friendly habits both at work and in their personal lives.
- We communicate our sustainability efforts to customers and encourage them to participate in our initiatives, such as bringing reusable cups.
- We continuously evaluate and improve our sustainability practices to ensure we are making the most positive impact possible.

### **Community Engagement**

- We will educate our customers about our sustainability initiatives
- We will participate in local environmental initiatives where useful.
- We will share best practices with other mobile food vendors
- We will carry out regular staff training on sustainability practices

### **Monitoring and Review**

- We will carry out quarterly reviews of waste, water and energy usage.
- We will carry out a half-yearly assessment of sustainability goals.
- We will annually review and update our sustainability policy.
- We will provide regular feedback to staff on sustainability initiatives.

### **Continuous Improvement**

We commit to:

- Staying informed about new sustainable practices in the coffee industry.
- Regular reviews and updating of our sustainability practices.
- Setting annual targets for reducing our environmental impact.
- Investing in new technologies and methods to improve our sustainability.

This policy is reviewed annually and updated as needed to reflect new sustainability practices and goals.